

Setup and configuration of SQL Server 2014 Express for use with Intelicode

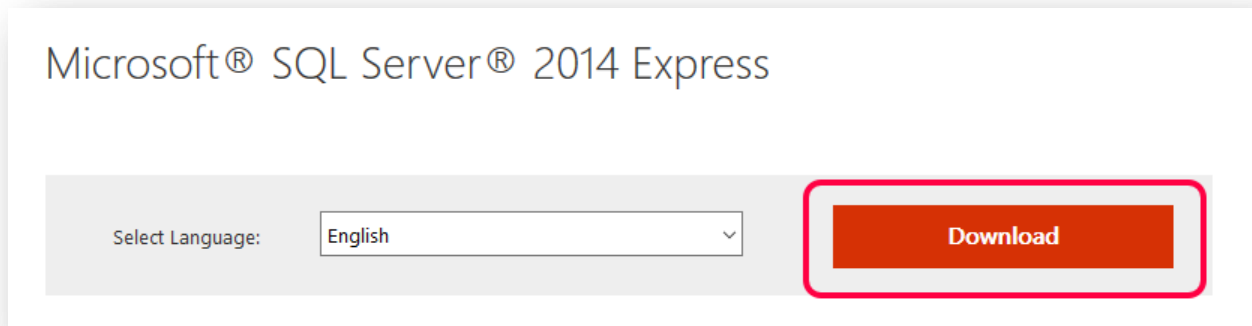
At Intelicode we want to provide the best user experience possible. To minimize customer wait time and prevent an increased load on our customer support team we are providing a complete SQL Server installation walkthrough document. SQL Server is utilized as our shared database solution. We provide this document as a courtesy to our customers to illustrate how to implement Microsoft SQL Server.

As SQL Server is a Microsoft product and not an Intelicode product there will be additional charges for SQL Server support. If after consulting this document you are still having issues, you can:

1. Contact Intelicode support. SQL Server installations performed by Intelicode staff or walked through by an Intelicode staff member will be billable. Advanced SQL Server troubleshooting and connectivity issues will also be billable. Current rates are available by contacting Intelicode at 800-786-4231.
2. Contact Microsoft at <http://support.microsoft.com/kb/319726> for assistance. Microsoft support is fee based.
3. Consult with your IT staff or an IT consultant for options.

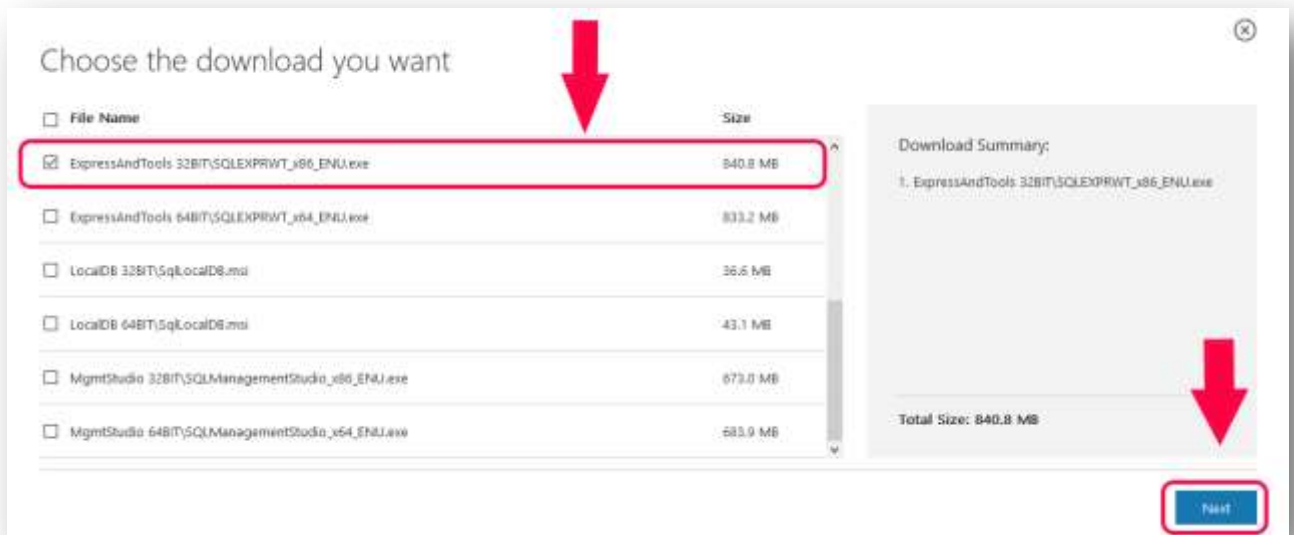
SQL Server installation directions are as follows:

After you have successfully installed Intelicode you may begin the installation of Microsoft SQL Server Express 2014. Go to <https://www.microsoft.com/en-us/download/details.aspx?id=42299> and click "DOWNLOAD".

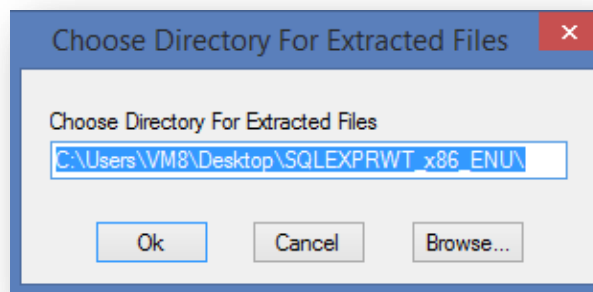


Look for "*ExpressAndTools 32BIT\SQLEXPRWT_x86_ENU.exe*", click the check box and then press the "NEXT" button on the bottom right and the download will begin. It's a large file so let it completely download.

Setup and configuration of SQL Server 2014 Express for use with Intelicode

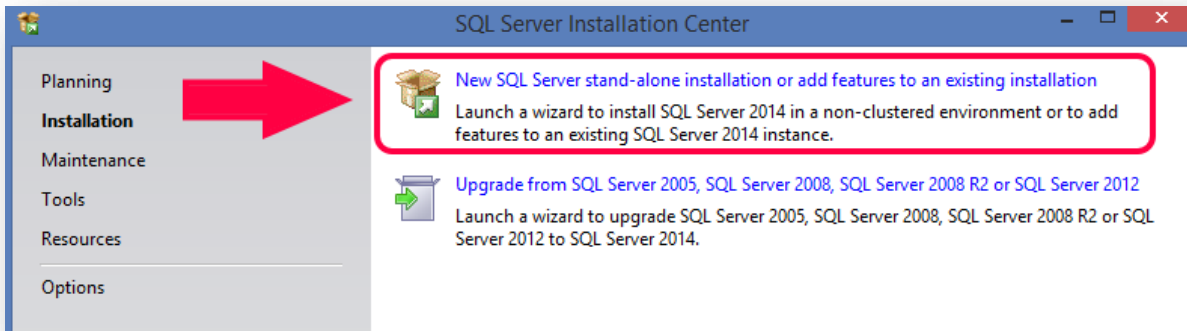


Find the downloaded file and double click it. Choose the directory you wish to install SQL Server in when the prompt comes up (default is recommended). Click the “OK” button and allow the program to run.

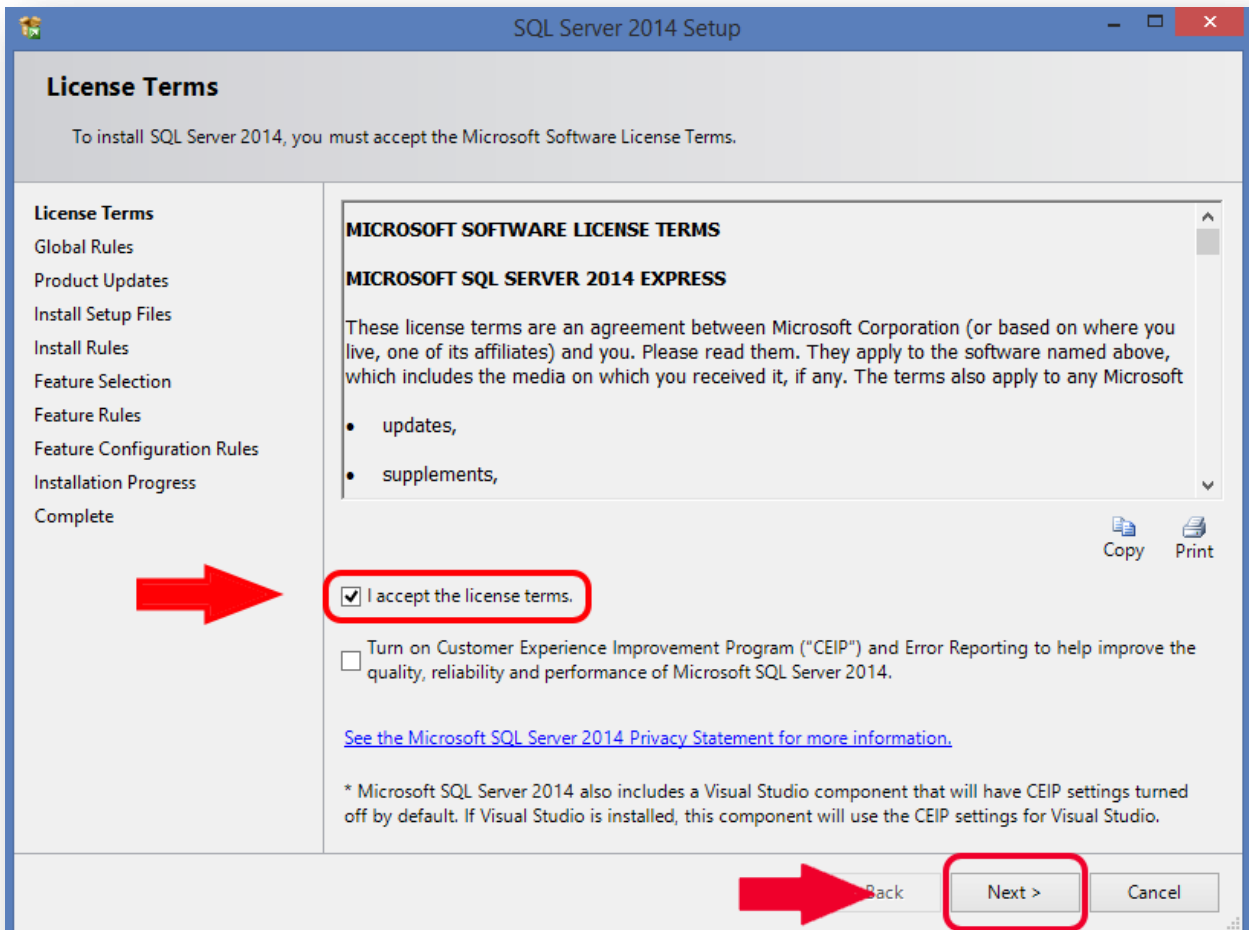


Click “New SQL Server stand-alone installation or add features to an existing installation”.

Setup and configuration of SQL Server 2014 Express for use with Intelicode

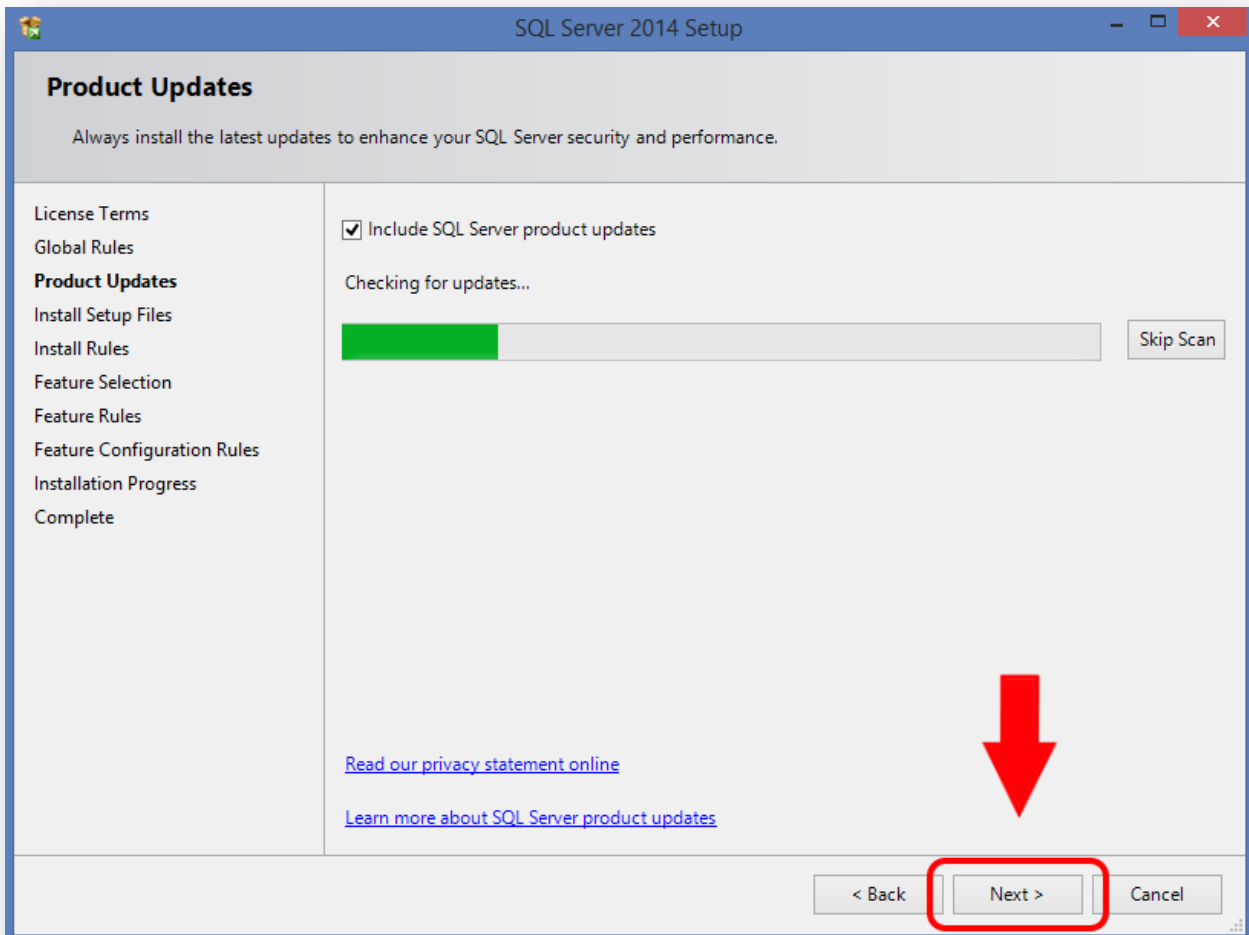


License Terms – click the check box “I accept the license terms” (it’s optional to turn on CEIP, not recommended). Then click “NEXT”.



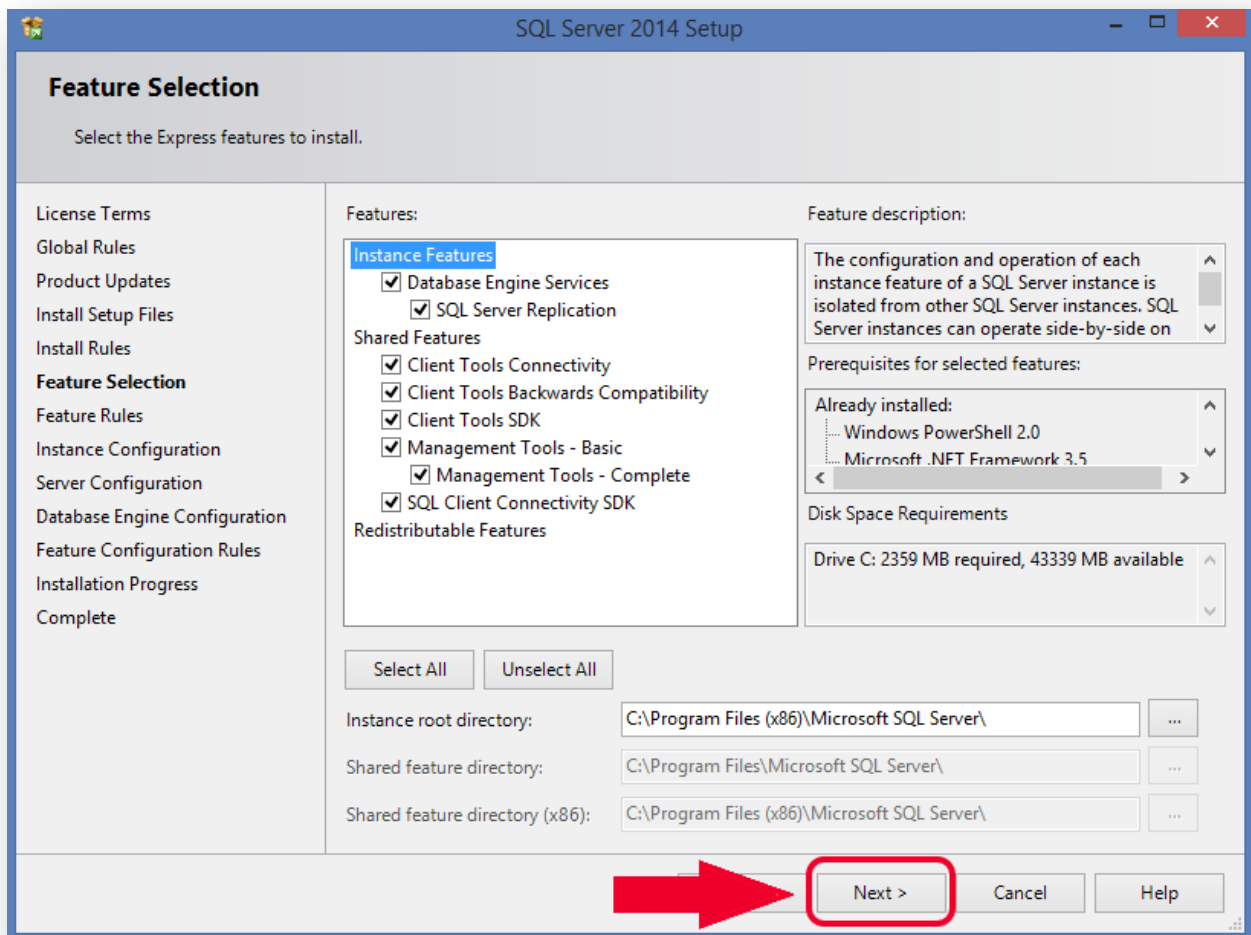
Setup and configuration of SQL Server 2014 Express for use with Intelicode

It will check for any potential problems that may pop up during instillation then click “NEXT”.



Setup and configuration of SQL Server 2014 Express for use with Intelicode

It will ask which features to install. Unless you are instructed to change anything, just click “NEXT”.



Setup and configuration of SQL Server 2014 Express for use with Intelicode

It will ask you to name the instance of SQL. You can change it but we recommend you leave it as SQLEXPRESS and click “NEXT”.

SQL Server 2014 Setup

Instance Configuration

Specify the name and instance ID for the instance of SQL Server. Instance ID becomes part of the installation path.

License Terms
Global Rules
Product Updates
Install Setup Files
Install Rules
Feature Selection
Feature Rules
Instance Configuration
Server Configuration
Database Engine Configuration
Feature Configuration Rules
Installation Progress
Complete

☐ Default instance

☒ Named instance:

Instance ID:

SQL Server directory: C:\Program Files (x86)\Microsoft SQL Server\MSSQL12.SQLEXPRESS

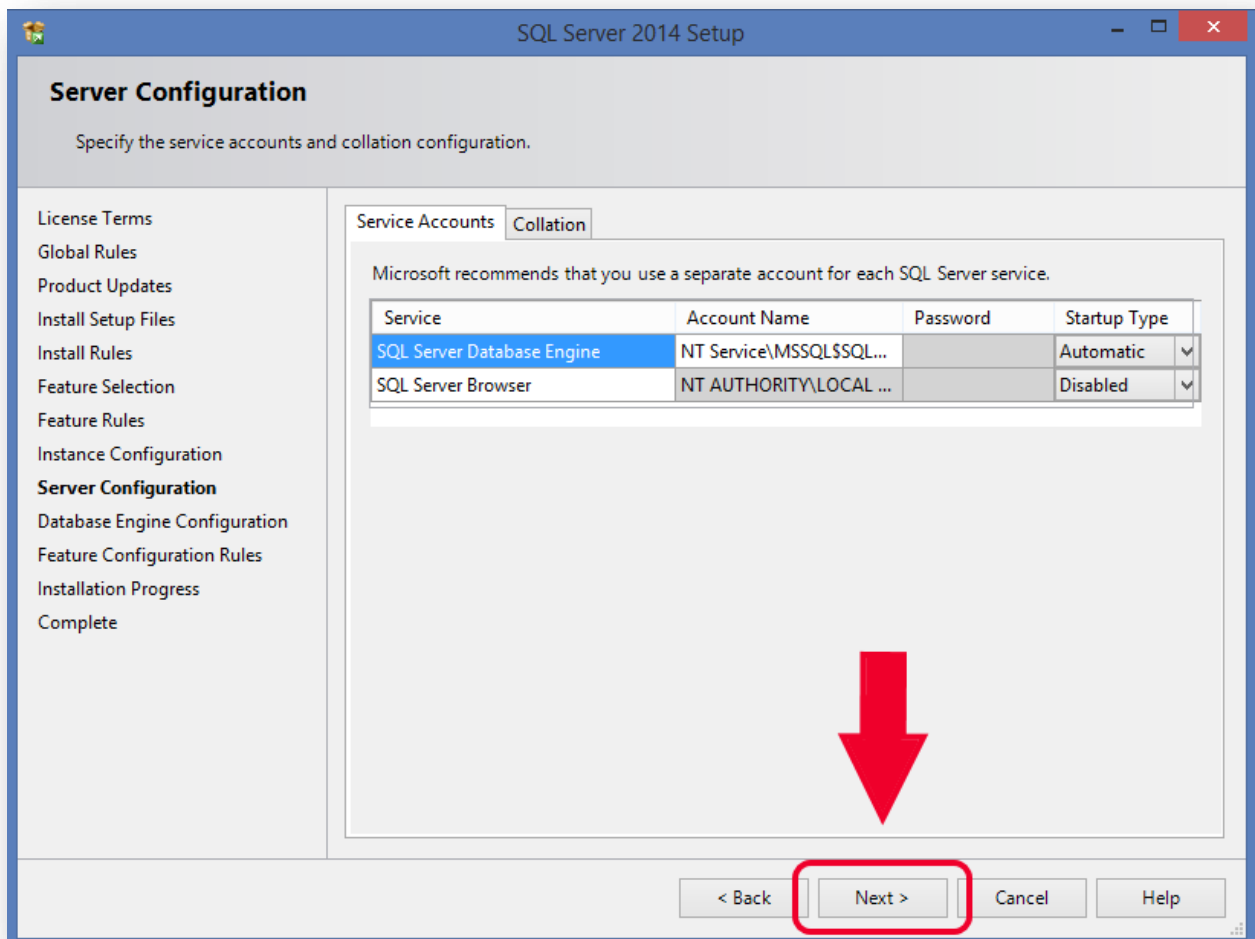
Installed instances:

Instance Name	Instance ID	Features	Edition	Version
---------------	-------------	----------	---------	---------

< Back **Next >** Cancel Help

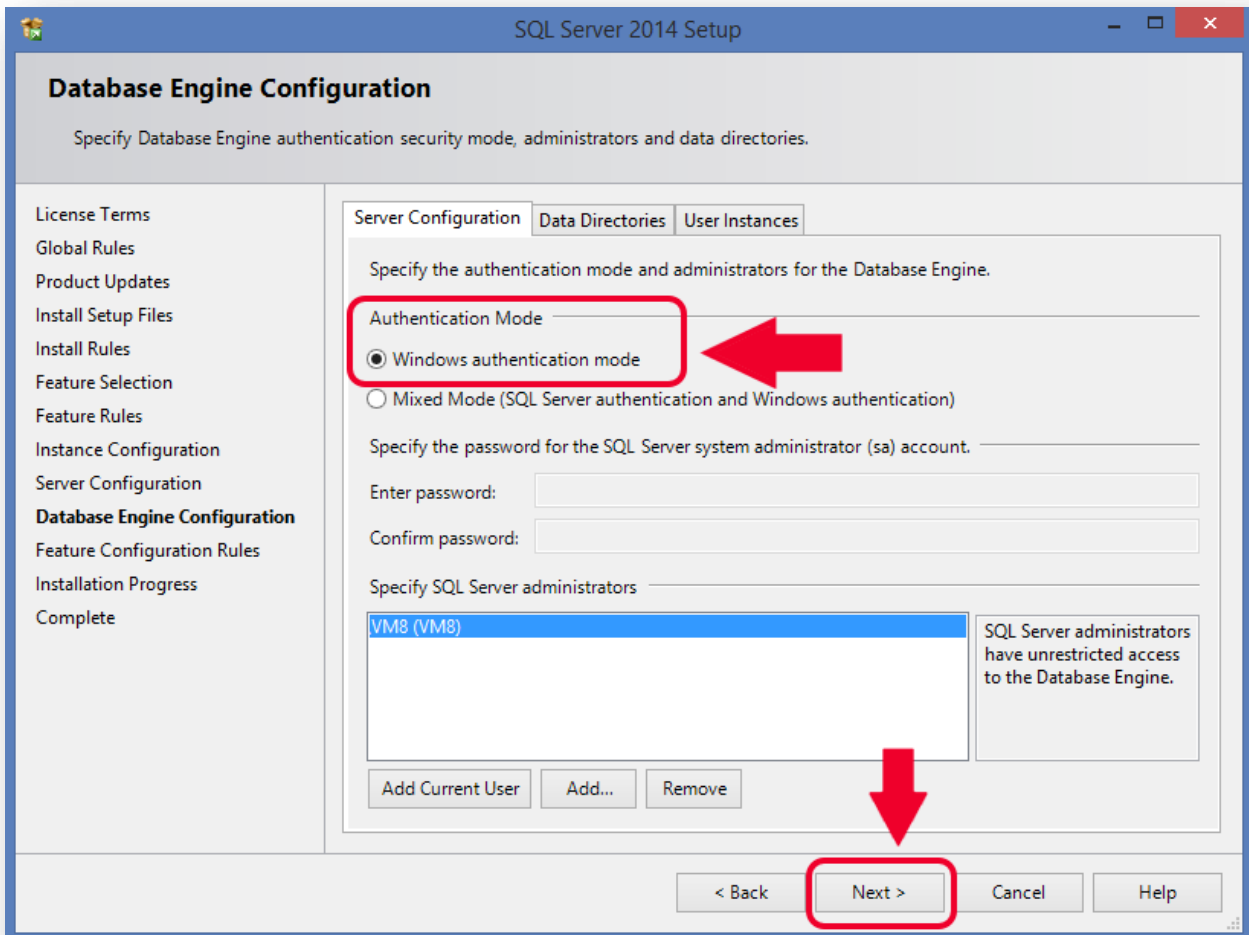
Setup and configuration of SQL Server 2014 Express for use with Intelicode

Unless you are instructed to change anything, leave the Server Configuration as is and click “NEXT”.



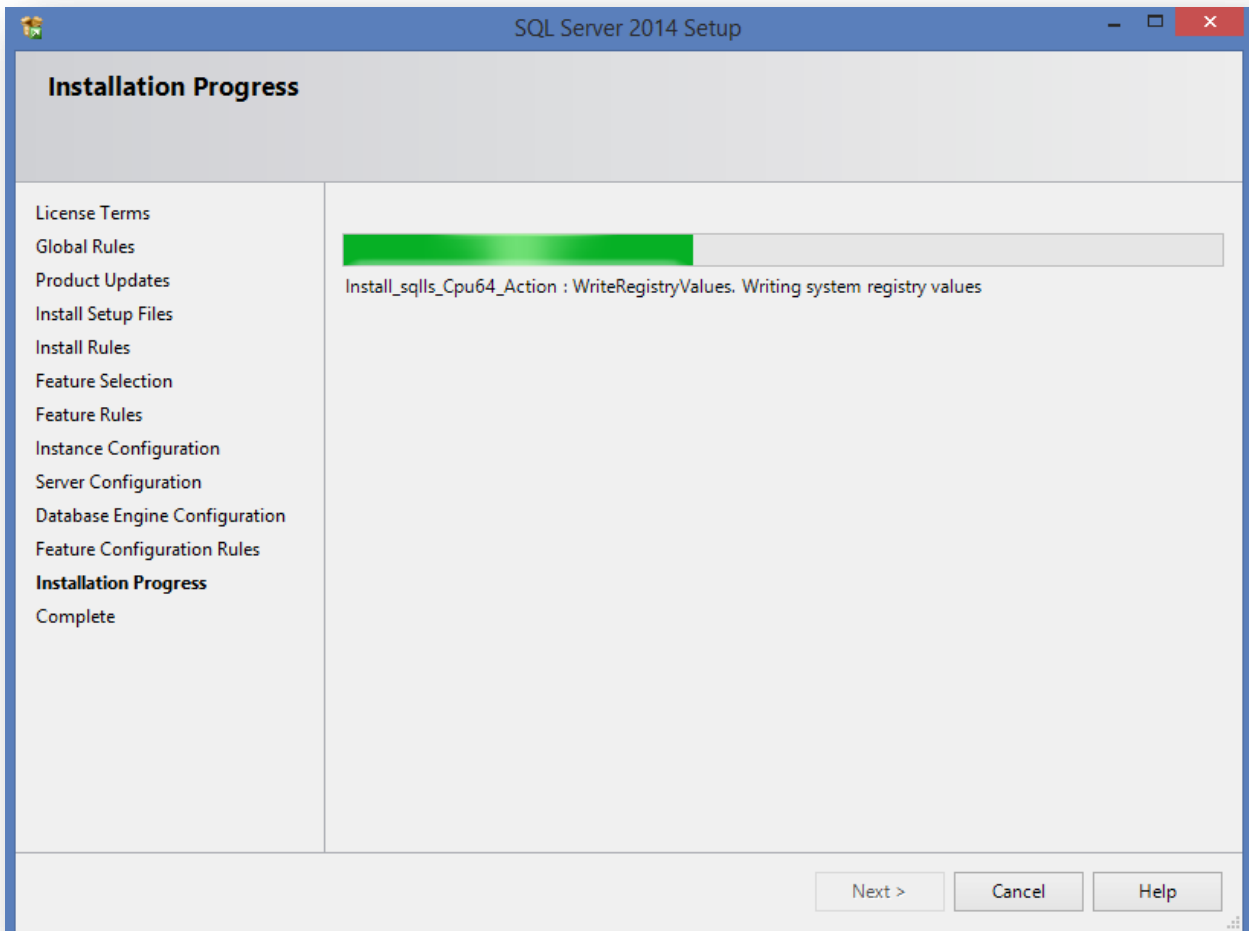
Setup and configuration of SQL Server 2014 Express for use with Intelicode

We recommend you use Windows Authentication instead of Mixed Mode, click “NEXT”.



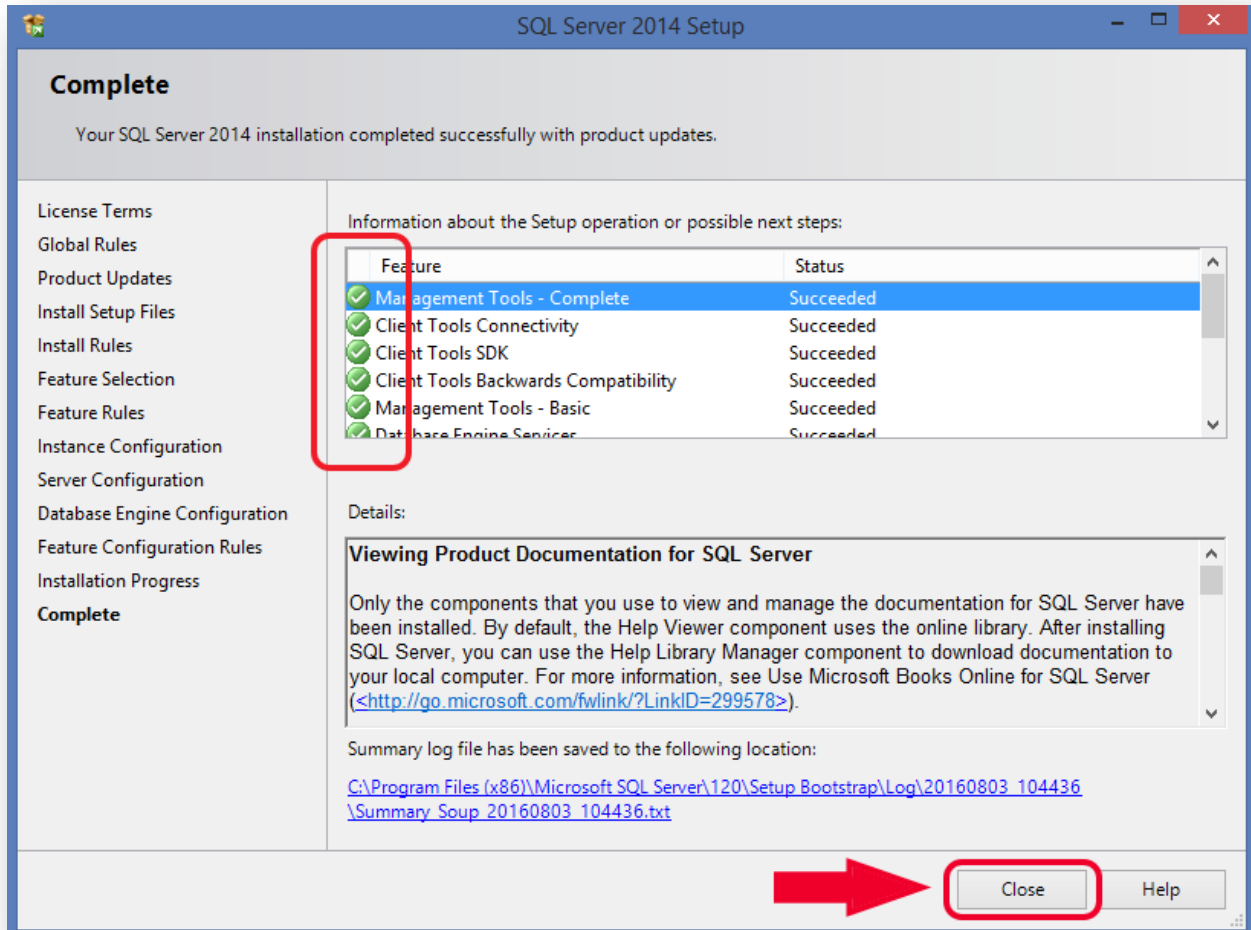
Setup and configuration of SQL Server 2014 Express for use with Intelicode

Allow the program to install. This may take a few minutes.



Setup and configuration of SQL Server 2014 Express for use with Intelicode

A window titled “complete” will show you everything that was installed. If everything has a green check next to it, it was a successful installation! Click “CLOSE”. Then click the red X at the top right to close the SQL Installation Center window.

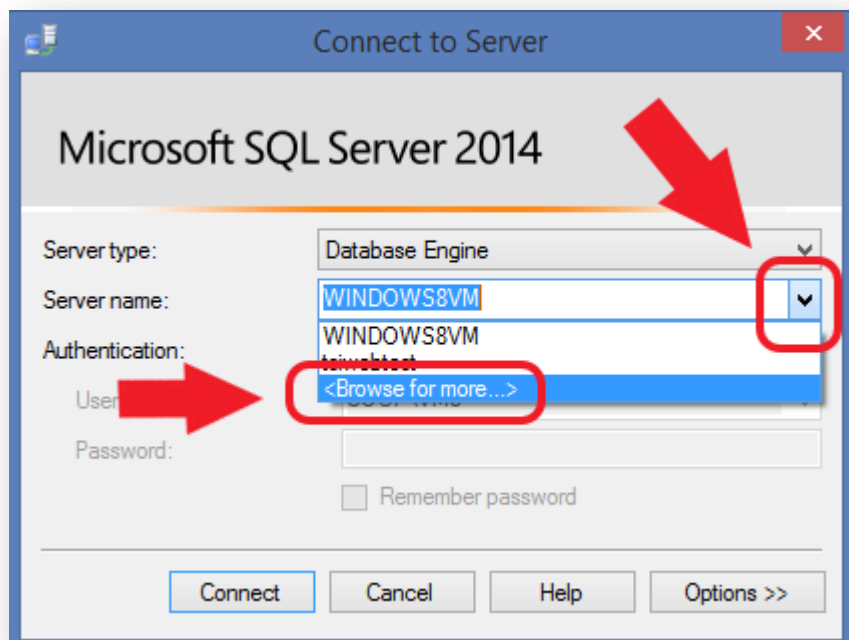


Setup and configuration of SQL Server 2014 Express for use with Intelicode

By default there is no icon specifically for the desktop. To have one, click the windows start button, click in the search bar, and type in *SQL Server 2014 Management Studio*. Once you find it, create a desktop (or equally accessible) shortcut. Double click the newly created icon to open Management Studio.

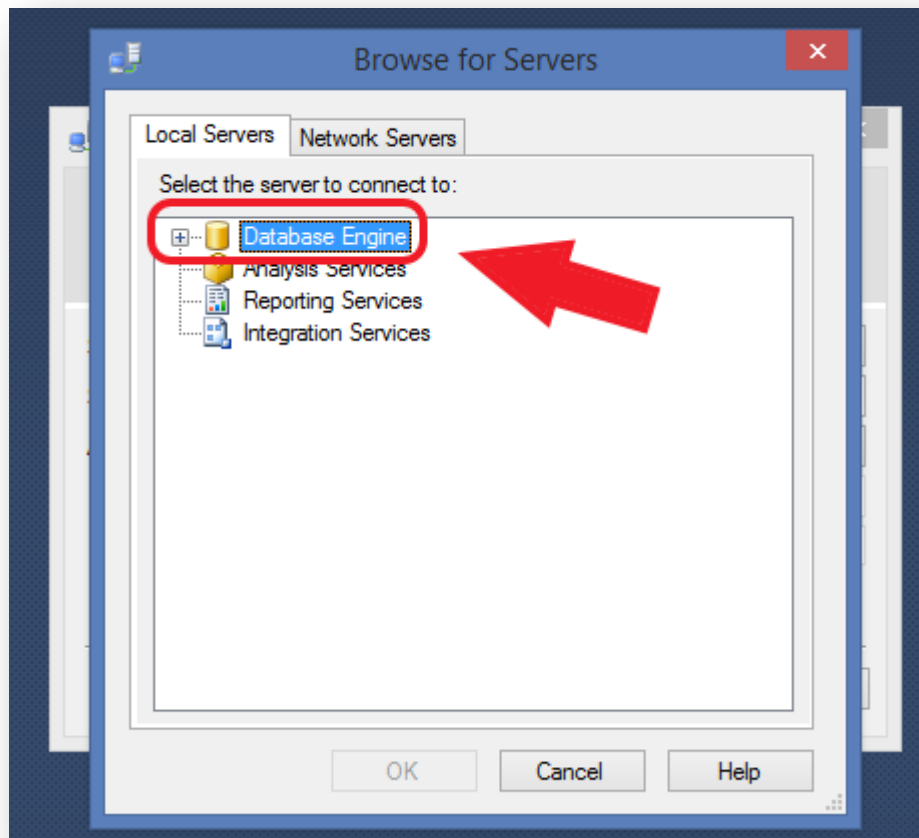


When the “Connect to Server” prompt pops up, enter your server name OR click the dropdown arrow on “server name”. Click “<browse for more>”, select which kind of server you use.



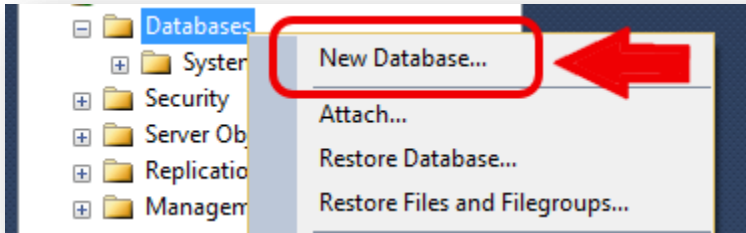
Setup and configuration of SQL Server 2014 Express for use with Intelicode

Click the little “+” next to Database Engine and find your user profile name. Click it and click “OK”. Then once on the main login screen again, click “connect”.

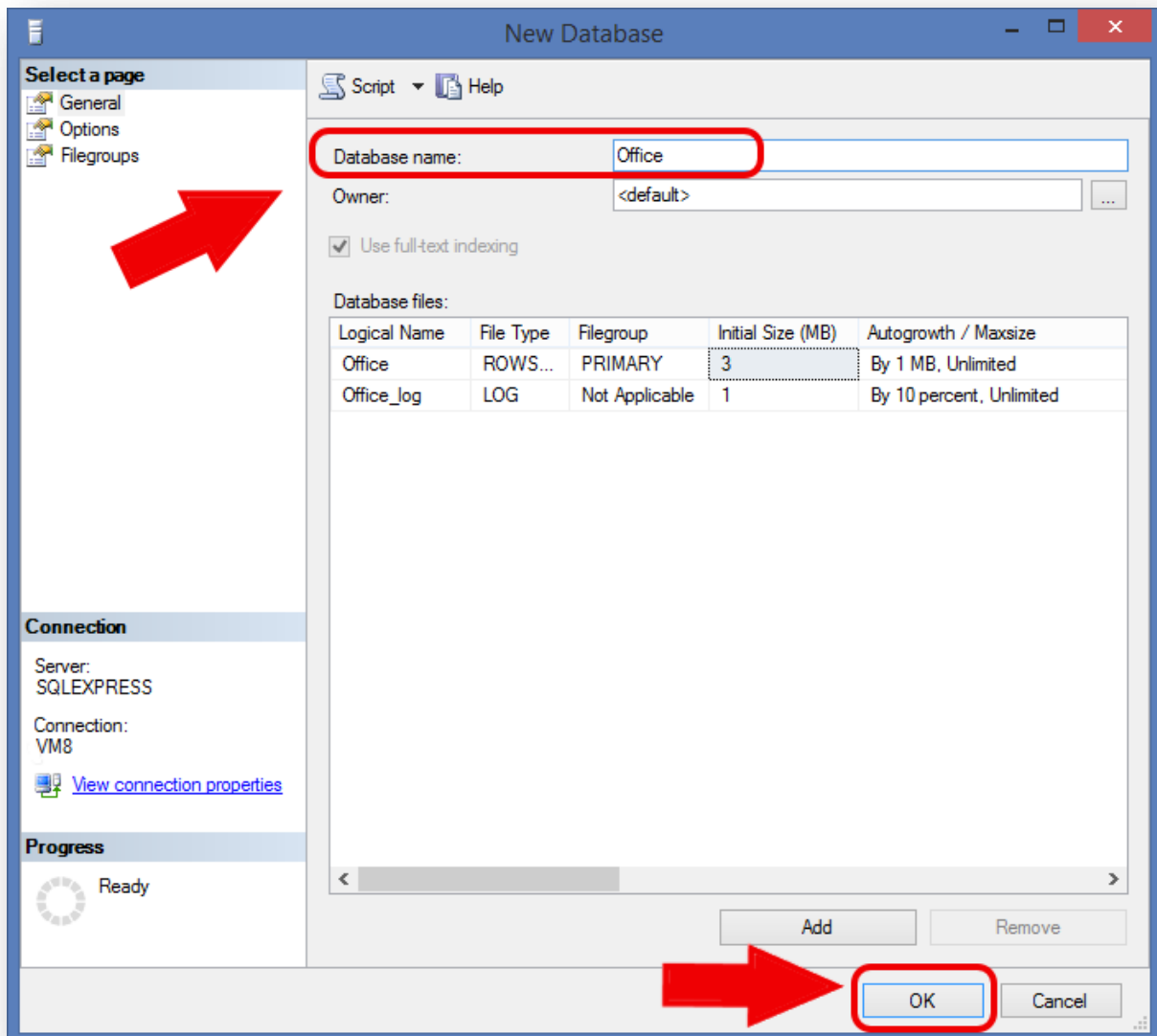


Setup and configuration of SQL Server 2014 Express for use with Intelicode

If everything was successful, you should see your server folders on the left side of your screen! If not, an error dialog will pop up. Right click on “*Databases*” and click “*New Database*”. Name it “*Office*” and click “*OK*”. If everything was successful, you should see a folder named “*office*”! If not, an error dialog will pop up. Repeat the process, only this time name the folder “*Provided*”.

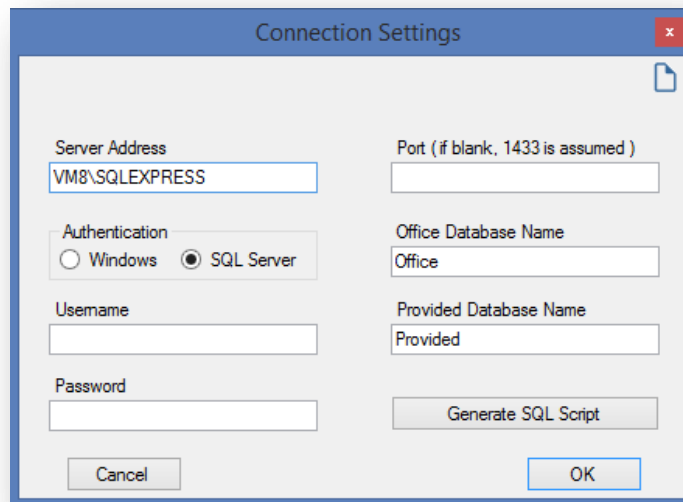


Setup and configuration of SQL Server 2014 Express for use with Intelicode

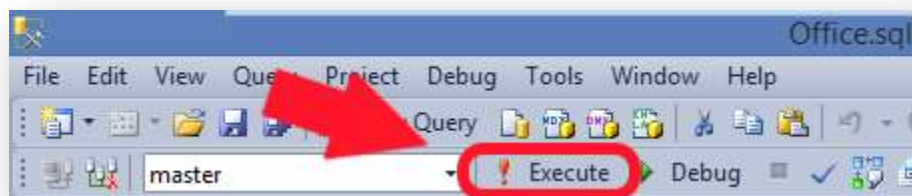


Setup and configuration of SQL Server 2014 Express for use with Intelicode

Now you need to run the SQL scripts to make everything work! The SQL Scripts can be obtained from the Intelicode program itself. Open Intelicode. Since you are not connected to a database, you will be directed to the connection settings page. Enter your SQL server name. For office put “*Office*”, and for provided put “*Provided*” Alternate names can be chosen but for the purpose of this documentation we will refer to them with the specified names. Click “*Generate SQL Script*” and select where to save the two scripts to. You may keep Intelicode open or close it once that step is completed.

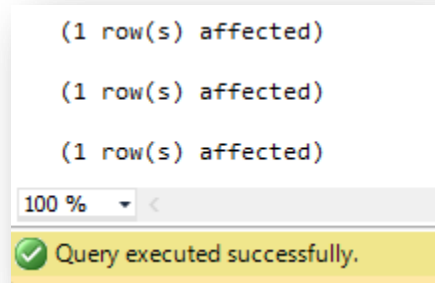


Open SQL Server Management Studio and drag your *OFFICE* script to the middle of the Management Studio window. You should see a lot of code and above that you should see a button with an exclamation point followed by the word *EXECUTE*. Click the *EXECUTE* button.



Setup and configuration of SQL Server 2014 Express for use with Intelicode

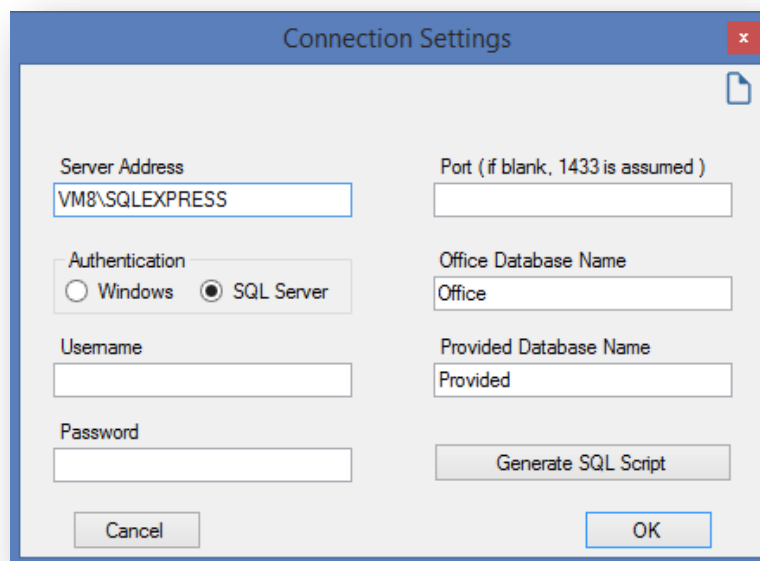
If completed without error there should be a 'Messages' window displaying many instances of "(1 row(s) affected)" and the final summary of 100% 'Query executed successfully'.



Close the "office" tab and repeat the process with your *PROVIDED* script. If completed successfully, it should do the same.

Close SQL Server Management Studio and open Intelicode. If not already at connection settings, click "Options > Administrator Panel". If it asks you to create an Admin Password, do so and remember the password. In order for us to be able to reset your password should you lose or forget it, you will be charged \$50. Once in the Administrator Panel, click "File > Connection settings".

Once in the connection settings window, enter the server name. It should be the same as your SQL Server name. Enter *Office* in the office space and *Provided* in the provided space, select the correct authentication that you chose whilst installing the SQL (SQL or Windows). Press "OK".



Setup and configuration of SQL Server 2014 Express for use with Intelicode

If everything was successful, you will be taken to the login screen and you are now ready to begin using Intelicode!



Intelicode is **not** responsible for the security policies or backups of any customer's SQL Server installations. Backups are recommended and should be conducted based on the customer's internal data retention policies. Data security is the responsibility of the customer, and if in doubt, a 3rd party security consulting service should be contacted.

It is estimated that you can store approximately 100,000 Intelicode audits per 1GB of disk space on the SQL Server instance. Actual usage may vary, and this figure is provided as a general guideline.

If you fail to connect, please verify the following:

1. Make sure there are tables in the Office and Provided databases. Running the scripts should have populated them.
2. Make sure your SQL Server TCP listening port (1433 by default) is not being blocked by a firewall.
3. If you are using Windows authentication, make sure the user attempting to connect is logged into the same domain as the server.
4. Verify the permissions for the databases on the SQL Server.
5. Restart the SQL Server Service from the Configuration Manager or from the Windows Services control panel in case a change made has not yet taken affect.